

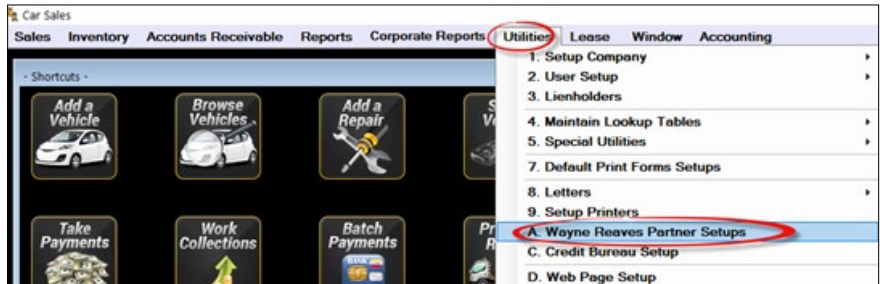


Enrollment Procedure

.NET Online Instructions

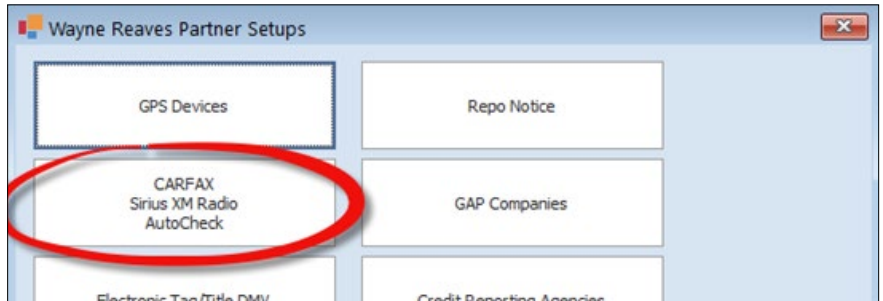
STEP 1

- Log in to Wayne Reaves, select “Utilities”, then “Wayne Reaves Partner Setups”.



STEP 2

- Click on Button that says “CARFAX Sirius XM Radio AutoCheck”.



STEP 3

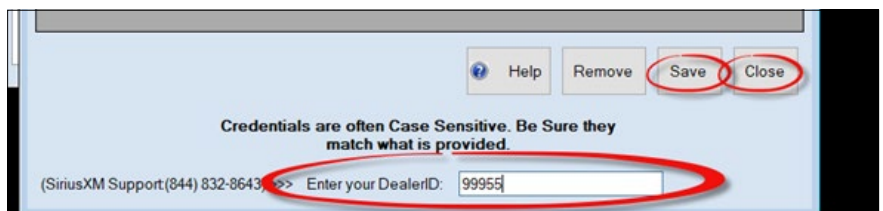
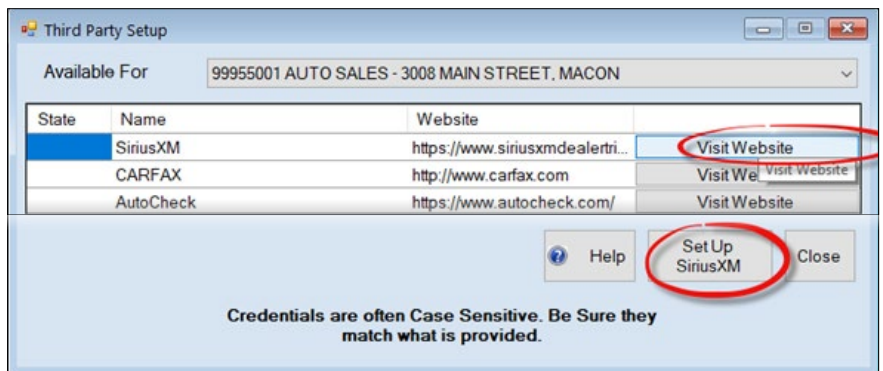
- Click on “Visit Website” next to “SiriusXM”, complete the enrollment form and submit.

STEP 4

- Click on the “Set Up SiriusXM” button

STEP 5

- Enter the 5 Digit Wayne Reaves Account number (If you have multiple locations, verify you enter the correct account number for each location). Click on the “Save” button. Click on the “Close” button.



MUSIC AD-FREE

TALK THE BIGGEST AND BRIGHTEST PERSONALITIES

COMEDY LAUGH OUT LOUD

NEWS WORLD-CLASS NEWS WHEN YOU NEED IT

SPORTS LIVE GAMES FROM EVERY MAJOR SPORT



Enrollment Procedure

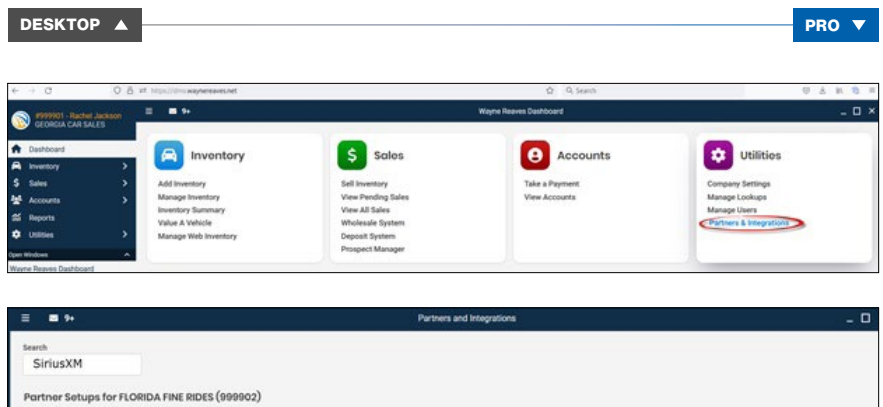
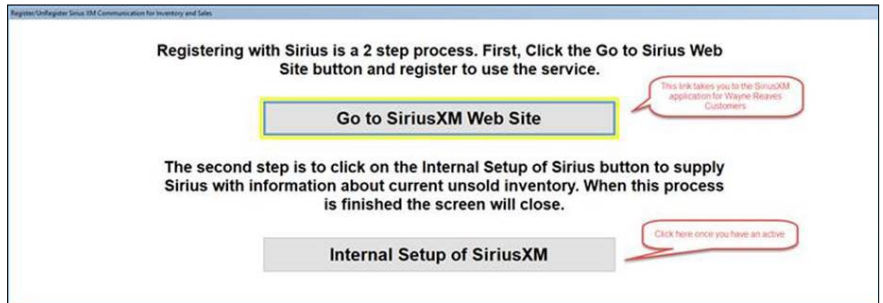
Desktop Instructions

STEP 1: ENROLL

- Open Wayne Reaves software, select “Utilities”, then select “SiriusXM Radio”
- Click “Go to SiriusXM Web Site”, complete the enrollment form then click “Join Now”

STEP 2: FILE SET-UP

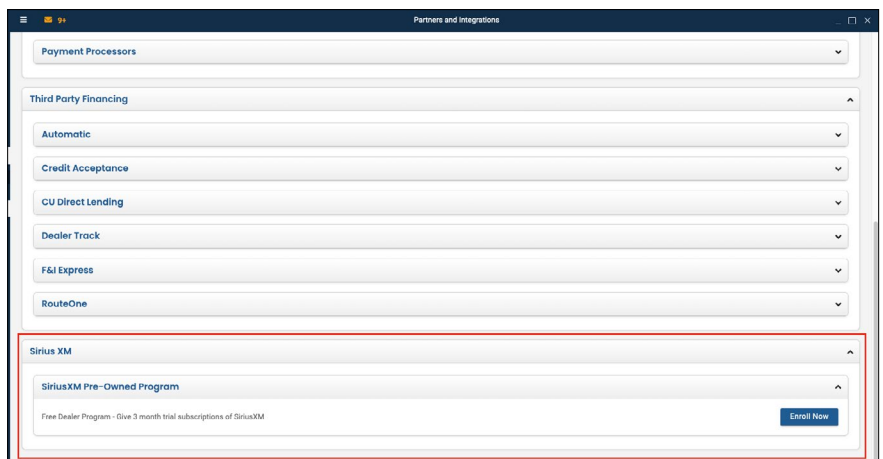
- Click “Internal Setup of SiriusXM” and the software will send a file of all unsold inventory and from this point on, every time a vehicle is added to inventory or a sale is completed, the vehicle & customer contact information will automatically be sent to SiriusXM.



Wayne Reaves Pro Instructions

STEP 1: ENROLL

- Log in to dms.waynereaves.net from any web browser, select “Utilities”, then “Partners and Integrations”
- Use the Search bar at the top left of the page to search for SiriusXM
- Or Use the Scroll bar to scroll down to SiriusXM
- Click the “Enroll Now” button, complete the enrollment form and submit.
- SiriusXM will activate your account and will notify Wayne Reaves within 24 hours of your enrollment. Wayne Reaves will then activate your SiriusXM integration, pull in the radio ID for each car, and start sending nightly feeds to SiriusXM.



- If you have problems during the enrollment please contact your DMS provider: **888-477-9707**